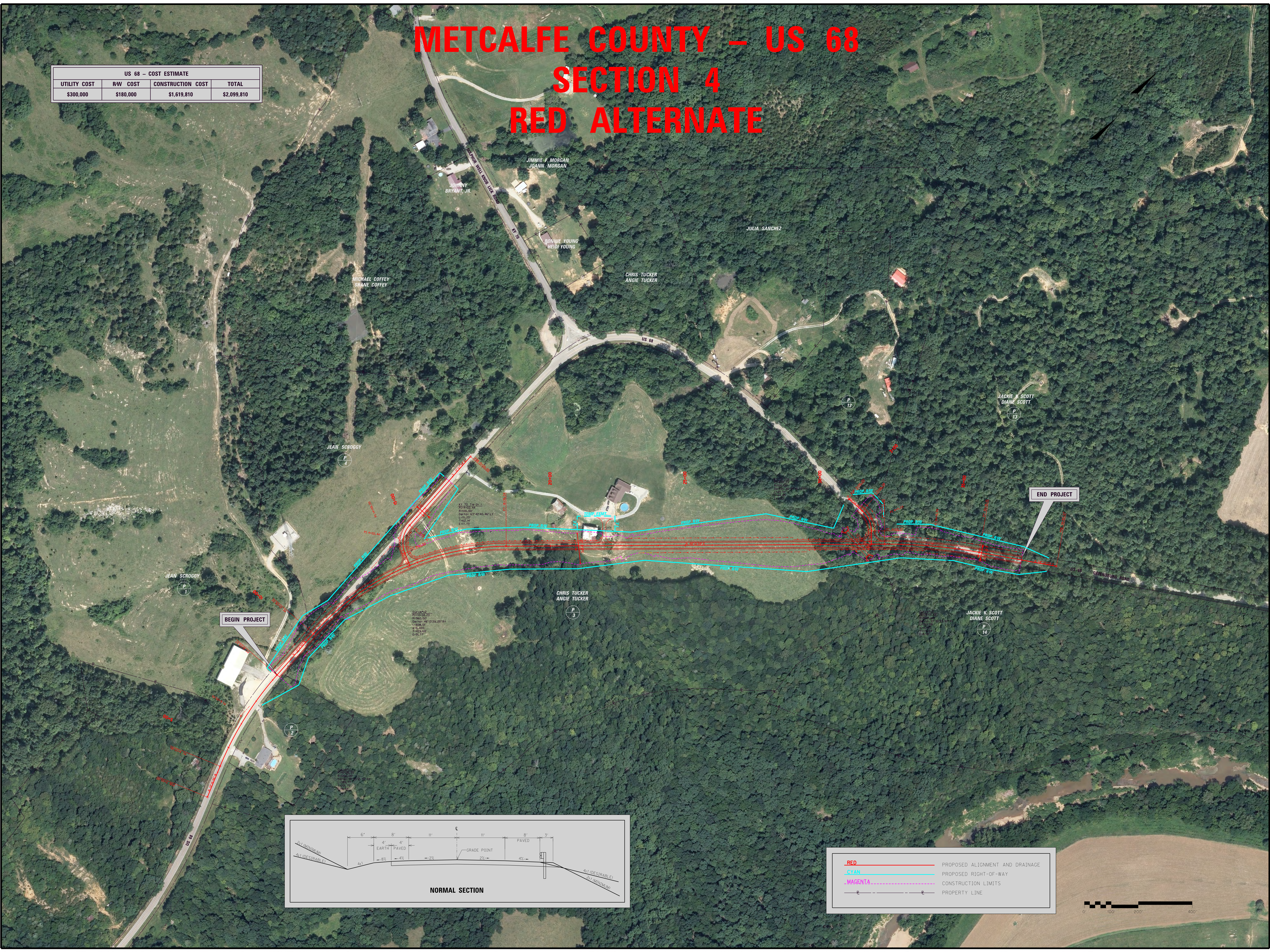


METCALFE COUNTY – US 68

SECTION 4

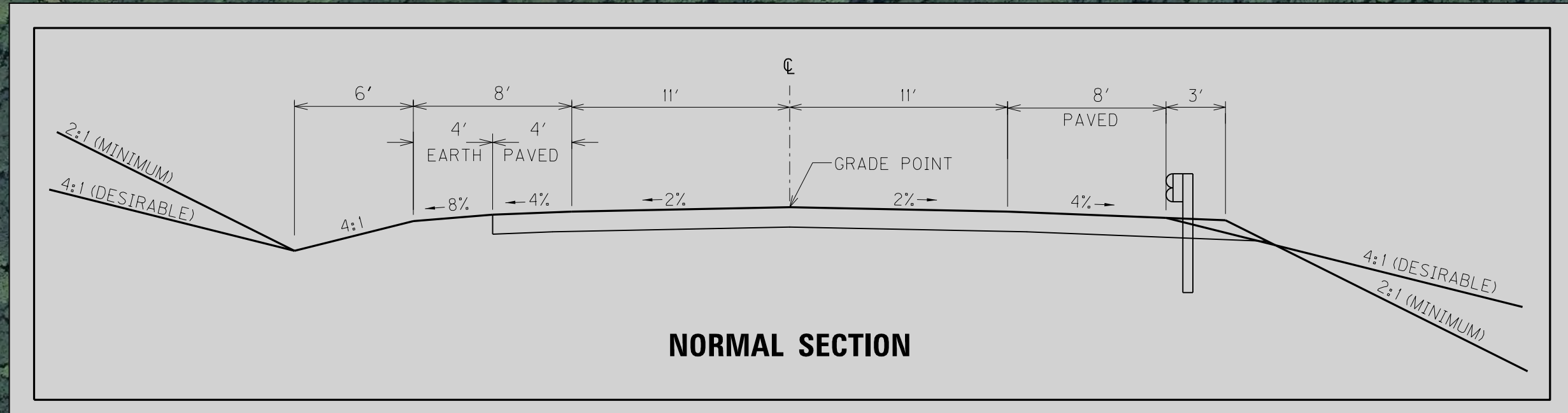
RED ALTERNATE

US 68 – COST ESTIMATE			
UTILITY COST	RW COST	CONSTRUCTION COST	TOTAL
\$300,000	\$180,000	\$1,619,810	\$2,099,810



BEGIN PROJECT

END PROJECT



RED	PROPOSED ALIGNMENT AND DRAINAGE
CYAN	PROPOSED RIGHT-OF-WAY
MAGENTA	CONSTRUCTION LIMITS
---	PROPERTY LINE

